

## Compact and Affordable: An Innovative HD Security Camera from Sony

Sony is pleased to introduce a unique addition to its network HD cameras lineup, the SNC-CH210.

This compact and affordable HD camera, supporting H.264, MPEG-4, and JPEG compression formats, delivers excellent and detailed images in HD resolution at 30 frames per second (fps). Incorporating the three-megapixel Exmor™ CMOS image sensor from Sony, which is specially designed for discreet surveillance applications, this camera demonstrates high image quality and low noise for surveillance. What's more, the SNC-CH210 has useful functions such as "Stream Squared" and PoE.

With excellent HD picture quality in a compact design, SNC-CH210 Fixed Network Camera is ideal for many surveillance applications, including retail outlets, schools, and other commercial buildings.



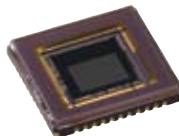
**HD**

### Network HD Camera **SNC-CH210**

Preliminary

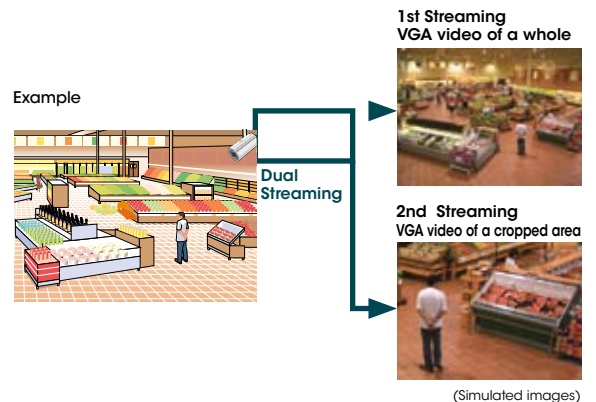
#### Key Features

- Excellent picture quality in HD 720p resolution, supporting H.264 at 30fps **HD**
- 3 Megapixel (2048 x 1536) maximum resolution
- The Exmor CMOS sensor delivers high image quality and high sensitivity for surveillance  
**Exmor™**
- Three codecs (H.264, MPEG-4, JPEG) with dual streaming capability
- Innovative design  
Compact, slim, and available in two body colors: suitable for many applications where security cameras need to be discreetly placed without being detected.



#### ■ "Stream Squared" function

"Stream Squared" is a function that allows simultaneous streaming of two 4:3 aspect ratio videos in user-selectable SD resolutions. You can select the entire image or a portion of the image from the original field of view and resize to SD resolution or lower for each stream. With this feature, the SNC-CH210 can replace two SD cameras installed in the same line of view.

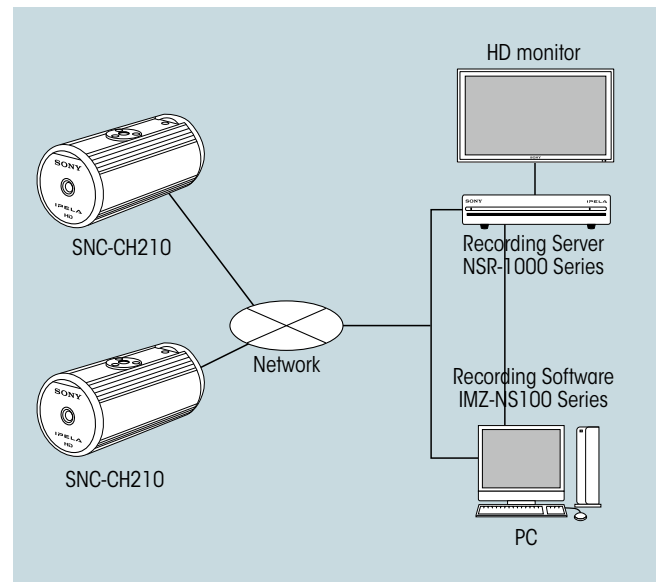


- Power over Ethernet (PoE) capability
- ONVIF™ Software **ONVIF**

## SPECIFICATIONS

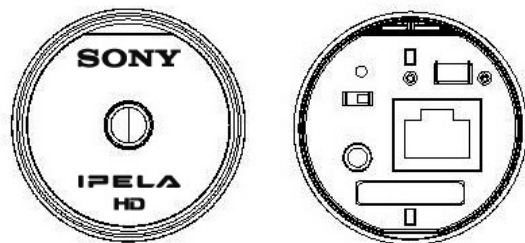
SNC-CH210	
<b>Camera</b>	
Image device	1/2.8 type progressive scan Exmor CMOS sensor
Minimum illumination	TBD
Number of effective pixels (H x V)	3 Megapixel (2096 x 1561)
Electronic shutter speed	1s to 1/10000s
Gain control	Auto
Exposure control	Auto Slow Shutter
White balance mode	Auto, Preset, One-push WB, Manual
Lens type	Fixed
Horizontal viewing angle	Approx. 90 degree (TBD)
Focal length	f=3.3 mm
F-number	F2.8
Minimum object distance	TBD
<b>Camera Features</b>	
Day/Night	Yes (electrical D/N)
<b>Image</b>	
Codec image size (H x V)	2048x1536 (JPEG Only), 1920x1080, 1600x1200, 1680x1050, 1440x900, 1280x1024, 1280x960, 1366x768, 1280x800, 1280x720, 1024x768, 1024x576, 768x576, 720x576, 704x576, 800x480, 720x480, 640x480, 640x360, 384x288, 320x240, 320x180 (H.264, MPEG-4, JPEG)
Video compression format	H.264, MPEG-4, JPEG
Codec streaming capability	Dual streaming
Maximum frame rate	H.264: 12fps (1920x1080) (TBD) / 30 fps (1280 x 720) MPEG-4: 15fps (1920x1080) (TBD) / 30 fps (1280 x 720) JPEG: 7fps (2048x1536) (TBD) / 30 fps (1280 x 720)
<b>Scene Analytics</b>	
Motion detection	Yes (TBD)
Tamper alarm	Yes (TBD)
<b>Network</b>	
Protocols	IPv4, IPv6, TCP, UDP, ARP, ICMP, IGMP, HTTP, HTTPS, FTP (client/server), SMTP, DHCP, DNS, NTP, RTP/RTCP, RTSP, SNMP (MIB-2)
ONVIF software	Yes
Number of clients	5 (TBD)
Authentication	IEEE802.1X
<b>Analog Video Output</b>	
Signal system	NTSC / PAL
Horizontal resolution	TBD
S/N ratio	TBD
<b>Interface</b>	
Ethernet	10BASE-T / 100BASE-TX (RJ-45)
Analog video output	Mini Jack
Sensor input	x 1
<b>General</b>	
Weight	TBD
Dimensions (ø x H)	1 3/4 x 3 3/4 inches (44 x 93 mm)
Power requirements	PoE
Power consumption	TBD
Operating temperature	32 to 122°F (0 to 50 °C)
Storage temperature	-4 to +140 °F (-20 to +60 °C)
System Requirements	Operating system Windows XP, Windows Vista™, Windows 7 Processor Intel Core2 Duo 2 GHz or higher Memory 1 GB or more Web browser Microsoft Internet Explorer® Ver6.0, 7.0, or 8.0

## SYSTEM CONFIGURATIONS

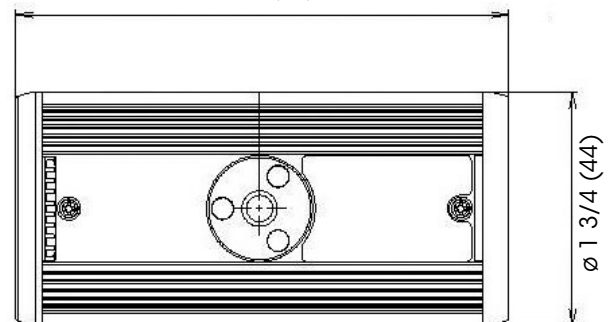


## DIMENSIONS

Unit: inches (mm)



3 3/4 (93)



The SNC-CH210 includes software developed by the OpenSSL Project for use in the OpenSSL Toolkit (<http://www.openssl.org/>).

© 2010 Sony Electronics Inc. All rights reserved.  
 Reproduction in whole or in part without written permission is prohibited.  
 Features and specifications are subject to change without notice.  
 Non metric weights and measurements are approximate.  
 Sony, 'make.believe' and their respective logos, IPELA and Exmor are trademarks of Sony.  
 Windows, XP, Internet Explorer, and Vista are trademarks of Microsoft Corporation.  
 Core is a trademark of Intel Corporation.  
 All other trademarks are the property of their respective owners.