

Trustworthy Surveillance:

- + Reliable network camera surveillance recorder for home and business
- + Record video from up to 4 network cameras (hard drive not included)
- + View real-time video of all 4 cameras from anywhere in your home or office, or remotely via the Internet
- + Allows concurrent viewing and recording

Dependable Data Security:

- + Protects important surveillance files with automatic backups to mirrored hard drives using RAID 1 technology²
- + USB connection to UPS is possible for power failure notification Flexible and Scalable
- + Allows connection of up to 4 NVRs together and managing up to 16 cameras as a group
- + Standalone device: eliminates the need for a dedicated PC
- + Supports D-Link, Sony, Panasonic, and Axis network cameras with smart PTZ camera control³

Precision Technology:

- + "Smart Search" technology accelerates and simplifies event investigation
- + D-Link Green solution: Consumes less power and eliminates the need for a dedicated PC for continuous recording
- + Live monitoring includes full-screen, snapshot and pan/tilt/zoom (PTZ) control
- + Precision playback with step/fast forward/rewind and video enhancement
- + Export video as AVI or ASF with timestamp
- + Calendar search and video preview before playback

**2-Bay Network Video Recorder (NVR), Pro Edition**

The answer to expensive, outdated, analog CCTV surveillance systems has arrived. When coupled with D-Link or other compatible network cameras, the SecureCenter[™] 2-Bay Network Video Recorder (DNS-726-4) offers a comprehensive video display, storage, and management solution. The DNS-726-4 provides reliable high-quality remote monitoring functionality at a fraction of the cost of conventional surveillance systems.

Instant Live View

The intuitive graphical user interface (GUI) simplifies viewing live and recorded video from the NVR. The camera status page shows connection and recording status, along with frame rate and bit rate information for each camera. Total available recording time for the system is also clearly displayed for each NVR.

Live Monitoring & Camera Adjustment

Users are provided with a variety of options for viewing and organizing camera footage on-screen. For a system with multiple channels, users can simply drag and drop selected cameras to the viewing area. Camera names and recording status are displayed via OSD to aid in identification. Presets from within the interface can be set to instantly restore a previously saved view. A single camera may be viewed full-screen with optional two-way audio. Users can control pan/tilt/zoom (PTZ) functions from within the interface using the provided interface buttons or by directly clicking on the video.

Extensive Recording Functionality

A clear single-page interface assists with configuration including compression, resolution and frame rate for all connected cameras. The DNS-726-4 records video from up to 4 local or remote network cameras. A total of four DNS-726-4 can be combined and administered with the

bundled D-Link D-ViewCam[™] NVR software to view up to 16 cameras. Once the cameras have been set up, a highly configurable scheduling system allows for continuous recording or at specifically allotted timeframes. Each camera can be set to record independently at preset intervals. The DNS-726-4 also provides event recording based on specific triggers. The NVR can be configured to overwrite the oldest data automatically when hard drive space runs out, allowing for continuous and uninterrupted recording. Users can specify the number of days the recording should be kept (within the limits of the hard drive capacity). For example, if the NVR has the capacity to store 7 days of recording, using the overwrite option, the NVR will record the 8th day and delete the 1st day. It also provides the option to stop recording when the hard drive is full. When the hard drive reaches capacity, a notification can be sent via e-mail or to an external device such as an audible alarm or LED display via the DI/DO interface.

Powerful Event Management

The DNS-726-4 centrally controls the digital output, e-mail notifications and recording for all connected cameras. Input triggers from camera motion detection or digital input interfaces can additionally be monitored. These events will be logged with optional notifications via e-mail or output devices. Users can set up multiple contact lists for event notification. A straightforward logging system organizes events by date for easy recall.

Intelligent Playback

Searching through recorded data can be tedious and frustrating. However, the DNS-726-4's Smart Search function makes detecting notable events effortless. By selecting a target area on the video and setting search sensitivity, Smart Search will traverse the video database based on specified search criteria to locate noteworthy events. Search criteria include options such as motion detection, missing or abandoned object, and lost focus or camera occlusion. After selecting a desired video period for display, the NVR can

Easy Setup and Configuration:

- + Directly connects to the Internet (PPPoE) without the need to install a remote router
- + Supports PPPoE, DHCP, and Static IP assignment
- + 2-bay SATA 3.5" HDD interface¹
- + Up to 3TB of hard disk storage space of recorded video¹
- + RAID 0/1 and JBOD support

Convenient Interface:

- + Effortless network camera setup and management
- + User-friendly interface provides simultaneous live view, recording and playback
- + Continuous or scheduled recording with automatic overwrite function
- + Reliable backup and power failure recovery functions

D-LINK GREEN

- + Uses a fraction of power than a PC, performing the same task.
 - + Eliminates the need for a dedicated PC.
- CONSERVING ENERGY**
- + Hard Drive Power Management: Hard drive(s) go into sleep mode when there is no device activity
 - + Smart Fan: Fan shuts down or adjusts speed based on system temperature.
 - + High efficiency power adapter to help reduce power consumption.

PROTECTING THE ENVIRONMENT

- + Complies with the European Union's RoHS directive that restricts the use of certain hazardous materials
- + Uses recyclable packaging to help reduce waste that goes into the environment.



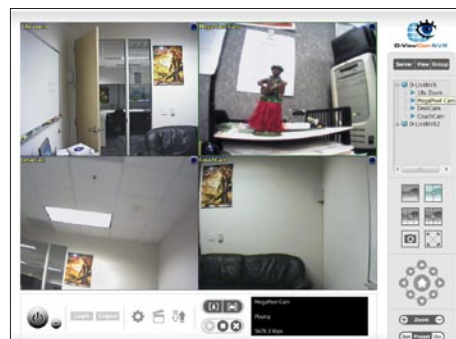
instantly begin playback. The DNS-726-4 supports 4-channel simultaneous playback. Playback speed control allows for up to 16x speed fast forward or fast backward play. The step playback option displays one frame at a time. Additionally, users can enhance the recorded video with controls such as brightness, contrast, and sharpness. During playback, if a user uncovers video that needs to be exported, two formats are available. The AVI format will export raw video. The ASF format will transpose a timestamp on the exported video. If a printer is connected to the user's PC, the NVR can also print the selected still image.

Comprehensive Data & Hardware Security

The DNS-726-4 ensures the security and integrity of IP camera footage. Administrators may filter external connections to the NVR by IP address, limiting access and thus increasing security. Administrators may also assign access privileges for users by specifying the cameras they may access for live view, playback, audio and PTZ functions. Recorded data is stored in a secure database. This recorded data can be backed up to additional storage locations periodically or when needed. The DNS-726-4 also includes the option to protect data using RAID 1 configuration². RAID 1 duplicates the recordings database onto two separate drives. In the event of a hard drive failure, data integrity is maintained on the secondary hard drive.

A UPS that supports 'smart' signaling over a USB connection can be used as an emergency power supply for the NVR. The UPS uses USB interface to notify the NVR to perform a proper shutdown before battery power runs out. Of course, data security is irrelevant unless the device itself is protected from theft. For this reason, the sleek NVR enclosure is compact and easy to conceal in a secure remote location. A front panel lock protects the hard drive and a rear panel lock can be used to secure the NVR with a cable.

4-Channel Live View



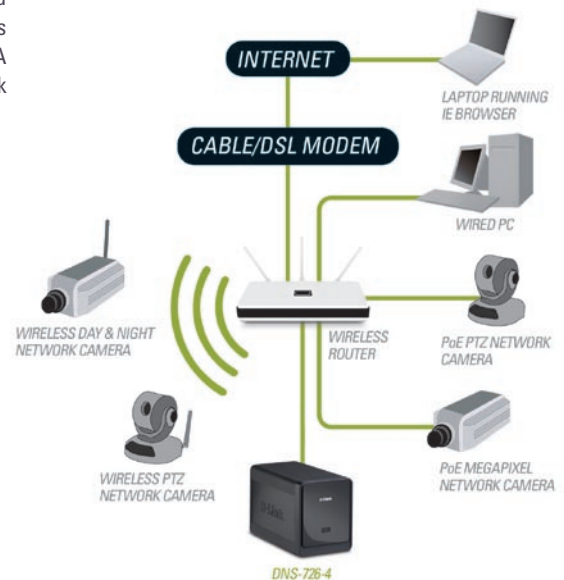
Complete Network Functionality

The DNS-726-4 NVR utilizes existing network architecture, taking advantage of features such as PPPoE and ADSL services. The NVR can acquire an IP address from a DHCP server to become easily searchable during installation. Dynamic DNS is supported for systems operating without a fixed IP address. The NVR can then be reached from the Internet using an easy-to-remember domain name provided by the DDNS service. Maintaining an accurate record of time is essential if recorded data is to be used as evidence. To ensure that the recorded time is always accurate, the NVR can update the system clock from an Internet server using the Network Time Protocol (NTP).

D-ViewCam™ NVR Software

The D-ViewCam™ NVR software bundled with the DNS-726-4 consists of three main components: Multi-NVR Viewer, Playback Manager, and Backup and File Manager. Multi-NVR Viewer supports simultaneous display of up to 16 channels. Easily organize your live view by directly dragging and dropping video onto the viewing area. Cameras managed by the NVR can be viewed as individual sites or categorized into groups. Playback Manager includes a clean and simple web GUI interface that allows users to play, search or export video. Backup and File Manager is a flexible backup utility that simplifies the process of backing up data from the NVR to external storage.

Network Setup Using D-Link NVR



Technical Specifications

Firmware Specifications

OS	+ Linux
Supported Cameras	+ Supports known-brand network cameras including D-Link, Axis, Panasonic, and Sony. Specific feature support depends on software.
Recording Performance	+ Up to 120fps (NTSC) at D1 resolution
Camera Search	+ UPnP
Audio & Video Recording	+ Synchronized audio & video recording
Compression Format	+ MPEG-4, MJPEG (for supported cameras)
Video Setting	+ Resolution, quality, frame rate, enable audio, go to camera interface
Recording Type	+ Recording by schedule, manual and event (digital input trigger, motion detection from camera)
Remote Live View	+ Supported via IE remote live viewer + Up to 4 simultaneous channels
Remote Live View Control	+ Live view, preset/go, patrol, focus, PTZ functions, remote IO, snapshot, full screen, digital zoom
Remote Playback Control	+ Playback with normal, fast forward/rewind and step forward/rewind + Smart Search Intelligent detection function (General Motion, Missing Object, Foreign Object, Camera Occlusion, Lose Focus)
Remote Playback	+ Supported via IE and NVR client + Playback system with timeline GUI, search by event, area, cameras, date and time + IE & NVR clients support 4-channel simultaneous playback and intelligent search + Digital zoom to specified area
Overwrite Recording	+ Auto recycling when disk storage is full
File Export	+ Exports videos to "AVI" or "ASF" (ASF with timestamp) file format + Exports images to "BMP" or "JPG" file format
User Account	+ Additional accounts can be created to allow user access to the system and specify authorization for camera channels, PTZ, etc.
DDNS	+ D-Link DDNS server support
System Time	+ Sets the system time (D-Link NTP, input time, sync with computer, Daylight Savings Time) Remote Backup
System Status	+ Camera status, System status
Remote Backup	+ Remote software can backup raw data to redundant storage
Network Service Protocols	+ IPV4, ARP, TCP, UDP, ICMP + DHCP Client + NTP Client (D-Link) + DNS Client + DDNS Client (D-Link) + SMTP Client + HTTP Server + PPPoE + UPnP + IP filtering
User Interface	+ Internet Explorer v6 or later + NVR Search utility

Hardware Specifications

Standards	<ul style="list-style-type: none"> + IEEE 802.3/u/z + Auto MDI/MDI-X + SATA I, II
HDD	<ul style="list-style-type: none"> + HDD control & manage via PC + Reformat Disk + RAID 0, 1 + JBOD
Two Reset modes	<ul style="list-style-type: none"> + Reset firmware GUI button + HW reset button (hold for 5 seconds)
Flash ROM	+ 32MB
RAM	+ 128MB DDR
Network Interface	+ Gigabit Ethernet LAN port (10/100/1000 Mbps)
I/O Ports	<ul style="list-style-type: none"> + RJ45 port x1 + DC-in jack x1 + USB port for UPS status update (optional)
Power Adapter	+ DC12V/3A, DC5V/3A
Reset Button	+ Reset to factory default
Security	<ul style="list-style-type: none"> + Front panel lock + Device lock hole
Power Consumption	<ul style="list-style-type: none"> + Maximum Power Consumption: 23.6W + Standby State Maximum Power Consumption: 7.3W
Dimension (W x D x H)	+ 4.1"(W) x 7.8" (D) x 5.2"(H) inches (104 x 198 x 132 mm)
Weight	+ 2.7 lbs (1.23 kg)
Operating Temperature	<ul style="list-style-type: none"> + Operating: 32° to 104° F (0° to 40° C) + Storage: -4° to 122° F (-20° to 50° C)
Humidity	+ Operating: 5% to 90% (non-condensing)
Package Contents	<ul style="list-style-type: none"> + SecureCenter™ 2 -Bay Network Video Recorder + Power Adapter + Ethernet Cable + Quick Installation Guide + Power Cable Holder + Keys + CD-ROM with: <ul style="list-style-type: none"> - Software - Product Documentation

Supported D-Link Cameras

Model

DCS-900	DCS-3415
DCS-910	DCS-3420
DCS-920	DCS-5520
DCS-950	DCS-5300
DCS-950G	DCS-5300G
DCS-2120	DCS-5610
DCS-3110	DCS-6110
DCS-3220	DCS-6620
DCS-3220G	DCS-6620G
DCS-3410	

Surveillance Product Comparison

Feature	D-Link NVR	DVR (CCTV)	PC NVR
Low Total Cost of Ownership	✓	X	X
Low Power Consumption	✓	X	X
Supports Camera With PoE	✓	X	✓
High Stability	✓	✓	X
Compact Size	✓	✓	X
Immune to Viruses and Malware	✓	✓	X
Powerful Management Software	✓	✓	✓

¹Hard drive(s) not included. An internal SATA drive is required to store your video files. The internal SATA drive(s) must be formatted before use. RAID 1 mirroring requires a minimum of two (2) 3.5" SATA drives. Supports up to 3TB capacity when two (2) 1.5TB 3.5" hard drives are installed in your DNS-726-4. Disk capacity may increase pending future advances in HDD technology. ²To avoid data incompatibility in RAID 1 operation, use SATA drives from the same manufacturer. Formatted drive capacity for RAID 1 operation is dependent on the drive capacity of the lowest-sized drive. May not work with older generation SATA drives. For a list of SATA drives that have been tested to work with the DNS-726-4, visit <http://support.dlink.com>. ³Please check <http://support.dlink.com> for a FULL list of compatible cameras.

All references to speed are for comparison purposes only. Product specification, size and shape are subject to change without notice, and actual product appearance may differ from that depicted herein.